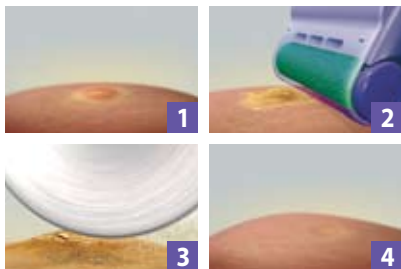


Emjoi®

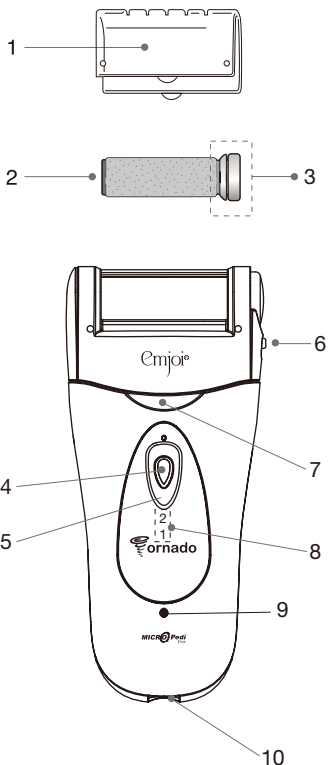
MICRO-Pedi™
Pro

ornado



AP-3MPR
Rechargeable

GENERAL DESCRIPTION OF PARTS



1. Protective Cover
2. Micro-Pedi Pro Tornado Roller
 - green for extra coarse skin
 - blue for regular skin
 - magenta for extra sensitive skin
3. End Cap of Micro-Pedi Pro Tornado Roller
4. Safety Switch Lock
5. On/Off switch
6. Release Button for Micro-Pedi Pro Tornado Roller
7. Release Button for the head attachment
8. Speed Indicator
9. Charging Indicator Lamp
10. Adapter Inlet

Emjoi®



Emjoi® Micro-Pedi Pro Tornado is an innovative device created to smooth dry, rough and calloused skin on the feet. Unique roller spins 360 degrees, at an amazing 30 times a second, to gently and effectively buff away hard, jagged skin on the soles and heels. **Emjoi® Micro-Pedi Pro Tornado** works faster and is much safer than metal scrapers, with no blades to cut the skin, and easy to use with no rubbing, like other methods. It has 2 speeds and is rechargeable to give salon quality results in seconds. Smooth, silky feet has never been easier.

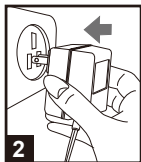
The **Emjoi® Micro-Pedi Pro Tornado** is a rechargeable device. It can be used without the cord or with the cord by connecting it to an electrical outlet. Your unit cannot be turned ON if the cord is plugged into the unit but not into the electrical outlet. Before using the **Emjoi® Micro-Pedi Pro Tornado** for the first time as a rechargeable device, it should be charged for, at least, 16 hours. It is recommended that you recharge your unit for 8-16 hours after each use so your unit is always charged when you need it. To preserve and extend the life of the battery, it is recommended to occasionally discharge the battery, let the charge run out completely, and then recharge it.

Each Micro-Pedi Pro Tornado roller is recommended for one person only. For hygienic reasons, the Micro-Pedi Pro Tornado roller should not be shared with others.

INSTRUCTIONS FOR USE

Before using your Emjoi® Micro-Pedi Pro Tornado, please read this instruction manual carefully and completely.

1. Insert plug into base of unit (fig. 1).
2. Place the adapter into the socket and charge for at least 16 hours, initially. Then charge for 8-16 hours as needed. If your unit is not charged the unit can be used while being plugged in (fig. 2).



HOW TO USE

Emjoi® Micro-Pedi Pro Tornado is designed for smoothing coarse skin on the feet and heels (fig. 3). Do not use this device anywhere else on the body.

Note: Only use Micro-Pedi Pro Tornado rollers on dry skin.

1. Wash and clean the skin and dry fully.

Note: Do not use on broken or bleeding skin.

2. Select the Micro-Pedi Pro Tornado roller you want and place it into the unit. See section of **Changing the Micro-Pedi Pro Tornado roller** on how to remove and replace the roller.

3 types of Micro-Pedi Pro Tornado Rollers are included to customize your results:

- **green for extra coarse skin**
- **blue for regular skin**
- **magenta for extra sensitive skin**

3. Remove the protective cover from the unit and it is ready to use.



4. To turn On your unit, press the safety switch lock and at the same time slide it up to the desired speed.

0 Power "OFF"

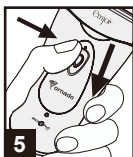
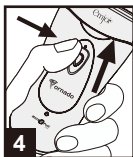
1 Low speed

2 High speed

5. Turn on the unit (fig. 4) and gently rotate (back and forth or side to side) over the callous/corn/hard skin area for **2-3** seconds. **Do not press hard - gently glide the unit over desired area.** The unit will stop if it is pressed too hard on the skin. Turn the unit off and check if you achieved the softness you desire. If not, turn on the unit and go over the area for **2-3** seconds more and check again. Continue to use this method until the level of smoothness is obtained.

Warning: Stop using if skin becomes sore or inflamed.

Warning: Do not use on skin for more than 2-3 seconds at a time.



6. Turn the unit off (fig. 5).
7. Rinse the skin or use a wet towel to get rid of the excess dead particles.
8. To clean the **Emjoi®Micro-Pedi Pro Tornado**, please see the Cleaning section.
9. Keep the protective cover on your unit when it is not in use.

CHANGING THE MICRO-PEDI PRO TORNADO ROLLER

The Micro-Pedi Pro Tornado roller contains fragile parts, please handle them with care.

Please take extra care when replacing the Micro-Pedi Pro Tornado roller.

Note: Micro-Pedi Pro Tornado rollers that are broken or worn could cause damage to the skin.

Change the Micro-Pedi Pro Tornado roller as needed for best result. Rollers last for a few sessions depending on frequency of use and size of area being treated. Replace as needed.

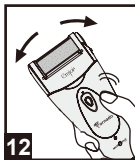
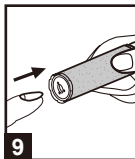
Replace the Micro-Pedi Pro Tornado roller when you find any defects to the roller or when you find them less effective.

Make sure the unit is turned off before replacing the Micro-Pedi Pro Tornado roller.

1. Pull down the release button, on the side of the unit, while the end cap is facing up and the Micro-Pedi Pro Tornado roller will pop out (fig. 6 & 7).
2. After the Micro-Pedi Pro Tornado roller pops out, remove it from the cylinder holding the end cap of the Micro-Pedi Pro Tornado roller (fig. 8) and dispose of it.



3. Remove the Micro-Pedi Pro Tornado roller from the replacement container (fig. 9), by pressing the bottom with your pointer finger and catching it in the palm of your opposite hand.
4. Place a new Micro-Pedi Pro Tornado roller into the unit until you hear a 'click' sound. Be sure to insert the new Micro-Pedi Pro Tornado roller into the unit with the thinner side going into the unit (fig. 10 & 11).
5. After placing a new Micro-Pedi Pro Tornado roller into the unit check that it has been firmly installed with no signs of shaky or loose parts (fig. 12).

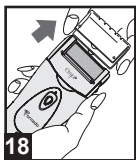
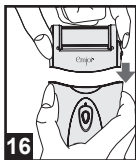
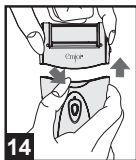


CLEANING

Before cleaning the Emjoi® Micro-Pedi Pro Tornado the roller must be removed. The Micro-Pedi Pro Tornado rollers should not be placed into water.

The **Emjoi® Micro-Pedi Pro Tornado** is not waterproof. The head is water resistant. The Micro-Pedi rollers should never be placed into water or disinfectant and should always remain dry.

1. Make sure to turn off your unit and if you have it plugged in, unplug it from the electrical outlets.
2. Remove the Micro-Pedi Pro Tornado roller (fig. 13). (see changing the Micro-Pedi Pro Tornado Roller section)
3. Remove the head from the unit (fig. 14).
4. Rinse the head (with no roller attached) under running water for 5-8 seconds (fig. 15).
Note: Be sure to remove the head from the base of the unit. The head is water resistant. The base cannot be rinsed or immersed in water.
5. Wipe the head with a clean dry cloth.
6. Place head onto base of the unit (fig. 16).
7. Insert the Micro-Pedi Pro Tornado roller (fig. 17). (see changing the Micro-Pedi Pro Tornado Roller section)
8. Replace the protective cover (fig. 18).



WARNING / IMPORTANT

- Please keep these instructions for future reference.
- The **Emjoi® Micro-Pedi Pro Tornado** is **ONLY** for use on the feet and heels. **Do not use this device anywhere else on the body.**
- Before using your **Emjoi® Micro-Pedi Pro Tornado** please read all these instructions carefully and completely.
- Use the **Emjoi® Micro-Pedi Pro Tornado** only for purposes described in this instruction book.
- This appliance is not intended for use by persons (including children) with reduced physical, sensory or mental capabilities, or lack of experience and knowledge, unless they have been given supervision or instruction concerning the use of the appliance by a person responsible for their safety.
- **Warning** – To reduce the risk of burns, fires or electric shock, never leave your **Emjoi® Micro-Pedi Pro Tornado** unattended when plugged in.
- This unit is intended for one person. Do not share this unit with others.
- Each Micro-Pedi Pro Tornado roller is recommended for one person only. For hygienic reason, the Micro-Pedi Pro Tornado roller should not be shared with others.
- Do not use if you have diabetes or poor blood circulation.
- If you have any skin conditions or other medical issues, please consult with your physician prior to use.
- Do not use on skin for more than **2-3** seconds at a time.
- Do not use the Micro-Pedi Pro Tornado roller when you find worn or nicked edges on the roller.
- Change the Micro-Pedi Pro Tornado roller as needed for best result. Rollers last for a few sessions depending on frequency of use and size of area being treated.
- Do not use on skin that is red, irritated, inflamed, infected or blistered.
- Do not use on warts.
- Do not use on sores or open wounds.
- Discontinue use immediately if you experience any pain or irritation.
- Overuse may cause skin irritation.
- Seek medical attention if skin becomes severely irritated or bleeds.
- Only use the **Emjoi® Micro-Pedi Pro Tornado** on dry skin.
- This unit is for dry use only.
- This unit is intended for professional use. Rollers are intended for one person. Rollers should not be shared.
- Always charge your unit in a cool, dry area.
- Do not use an extension cord with this unit.
- Do not place or store your unit in direct sunlight. Please store your unit in a cool dry place at a temperature between 0 - 40°C.
- Keep the appliance dry, when it is not in use and after cleaning.
- Do not store your unit where it can fall into a tub or sink of water.
- **Warning** – Do not use your **Emjoi® Micro-Pedi Pro Tornado** while bathing or in the shower. Your **Emjoi® Micro-Pedi Pro Tornado** body is not waterproof or water resistant and is not intended to be used near water, in the bathtub or in the shower.
- Do not place your unit in water or drop water into your unit.

- Do not reach for your unit if it has fallen into water. Immediately unplug the unit.
- The **Emjoi® Micro-Pedi Pro Tornado** can be used with the adapter supplied with the unit, after being plugged into an electric outlet or used without the adapter when it is fully charged. Prior to using the unit for the first time cordlessly it needs to be charged for 16 hours.
- When the unit is used with the adapter, place the adapter into the unit and then into the electric outlet. Make sure that the plug is inserted firmly into the appliance. When you are finished using your unit turn the unit "OFF" and then remove the adapter from the electrical outlet and then from the unit.
- When you unplug your unit please pull on the plug and not on the cord.
- Do not wrap the cord of your adapter around the unit.
- Keep the cord of the adapter away from hot surfaces.
- Never use your unit if the adapter cord or electrical outlet is damaged.
- Do not cut off the adapter to use it with another plug as this can be a hazardous situation.
- Only use your **Emjoi® Micro-Pedi Pro Tornado** with the adapter supplied with the unit. For questions regarding your adapter in the US contact 1-888-99EMJOI, M-F, 9-5 EST.
- **Caution:** Before plugging into an electrical outlet, make sure that the adapter is appropriate for the local voltage. This is extremely important when traveling overseas.
- To preserve and extend the life of your battery it is recommended to occasionally discharge the battery, let the charge run out completely, then recharge it.
- This appliance must be disconnected from the supply mains when removing the battery.
- The battery must be removed from the appliance before it is scrapped.
- The battery is to be disposed of safely.
- Never use your unit if it has been damaged or submerged into water.
- Do not use water or any other liquid on the Micro-Pedi Pro Tornado rollers.
- Do not turn your unit On if the Micro-Pedi Pro Tornado roller is not attached.
- Always turn your unit "Off" when it is not in use and before cleaning it.
- Do not use this unit if the Micro-Pedi Pro Tornado roller is damaged as this could lead to injury.
- Do not drop or insert anything into any openings of the unit.
- Do not use your unit outdoors.
- Do not use your unit where aerosol products or oxygen is being used.
- Children should be supervised to ensure that they do not play with this appliance.
- Keep your unit out of reach of children as it is not intended for use by children.
- This appliance is not to be used on, by or near children or invalids.
- To prevent accidents and injury to you or damage to the unit – when your **Emjoi® Micro-Pedi Pro Tornado** is in use, keep it away from the hair on your scalp, your eyebrows, eyelashes as well as clothes, brushes, wires, cords, shoelaces, etc.
- If you have any medical conditions, issues, questions or any sensitivity whatsoever we strongly advise you to consult with your health care provider before using this product.
- If you have a pacemaker consult with your health care provider prior to use.
- Do not continually rub the unit on the same area or apply strong pressure.
- Keep the protective cover on your unit when it is not in use.

Warranty

The **Emjoi® Micro-Pedi Pro Tornado** warranty against defects in materials and workmanship lasts one year from the date of purchase.

Keep original receipt for warranty service.

During this warranty period, return the product to Emjoi, Inc. with proof of purchase to FDR Station, PO box 7406, New York, NY 10150. Emjoi will take care of repair, or at their discretion, replacement of a defective unit without charge. For questions regarding this policy you may call toll free 1-888-99-EMJOI (1-888-993-6564) M-F, 9-5 EST.

Important: This warranty does not cover damages resulting from accidents, misuse, alterations, abuse, lack of reasonable care, or performance of services or repairs by an unauthorized service center.

The manufacturers and distributors of the **Emjoi® Micro-Pedi Pro Tornado** do not assume responsibility for any damage caused by misuse or use other than that described in these instructions.

Model: AP-3MPR

Patents pending

Made in P.R.C.

© Soft Lines International Ltd. 2012