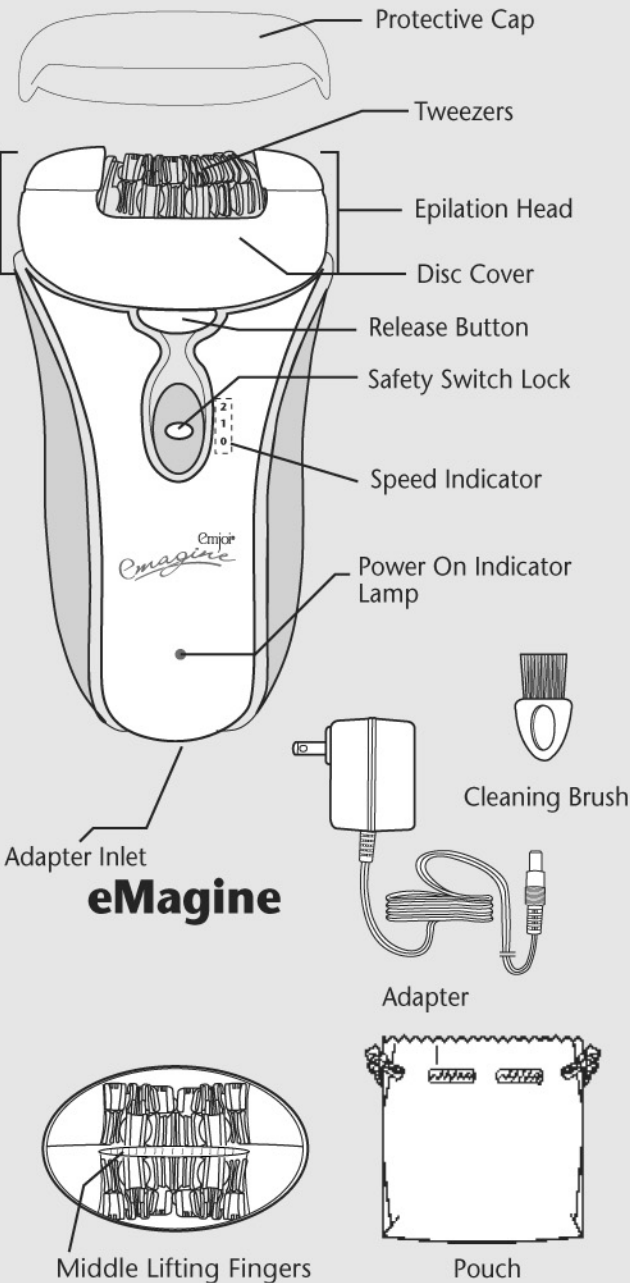


**Note:** When placing the shaving attachment into the unit, make sure that the toothed wheel on the unit and the opening of the shaving attachment line up.

Q: What is the comb coming out of each side of the shaving attachment?  
A: That is a long hair trimmer to make shaving even more effective than the foil head alone.

Q: How do I clean the shaving attachment?  
A: It is recommended to clean the shaving attachment after each use. Use the cleaning brush, enclosed, to gently brush the hairs off the unit.

### Parts Description/Accessories Name

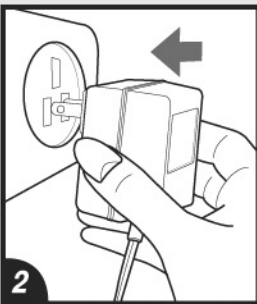


### Instructions for use

For ultimate results take a warm bath or shower and use a loofa or exfoliation cream, in small circles to remove dead skin and open pores. Doing this before you use your **Emjoi® eMachine** will help to make the hair removal process more comfortable.



1 Insert plug into base of unit.



2 Place the adapter into socket.

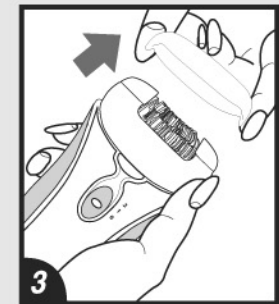
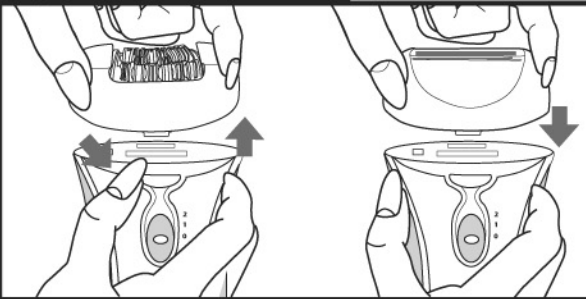


7 Use short, quick, brush like or sweeping motions in the direction of hair growth.

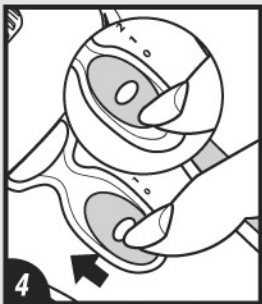


8 Take extra care to extend the leg before removing hair from behind the knee.

### Optional Attachment



3 Remove the plastic protective cover.



4 To turn On the unit, press the safety switch lock and at the same time slide it up to the desired speed.  
The unit has 2 speeds:  
0 Power "OFF"  
1 Low speed for fine hair  
2 High speed for coarse hair

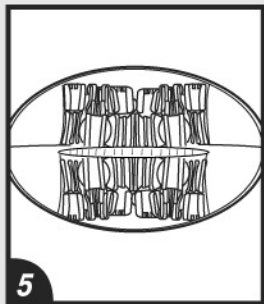


9 May be used for the bikini area (hold the skin taut with one hand).

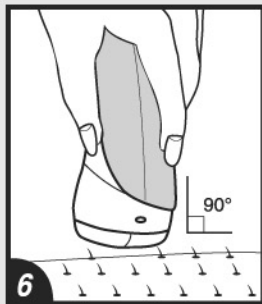


10 Can be used to remove **individual** hair on the upper lip and chin but you must hold the unit so only **one** of the epilation heads is parallel with the skin. Do not use both of the epilation heads on the face.

Changing the Optional Attachment:  
Turn off the unit. Remove the epilation head by pressing the release button on the front of the unit. Place the shaver head onto the unit until it clicks into place, by lining up the toothed wheel on the body and the attachment.



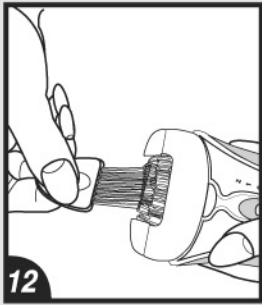
5 Middle lifting fingers prepares hair for removal by lifting flat and short hair and decreases the possibility of ingrown hair.



6 Hold the unit in your palm, at a 90° angle, so the Emjoi® logo is facing you. Do not apply pressure; just glide the unit over the surface of the skin.



11 May be used to remove hair from underarms (extend your arm so skin is stretched taut).



12 Gently brush the tweezers to remove any hair.

### Warranty

The **Emjoi® eMachine** warranty against defects in material and workmanship lasts one year from the date of purchase.

### Keep original receipt for warranty service.

During this warranty period, return the product to Emjoi, Inc. with proof of purchase to FDR Station, P.O. Box 7406, New York, NY 10150. Emjoi will take care of repair, or at their discretion, replacement of a defective unit without charge. For questions regarding this policy you may call toll free 1-888-99-EMJOI (1-888-993-6564).

**Important:** This warranty does not cover damages resulting from accidents, misuse, alterations, abuse, lack of reasonable care, or performance of services or repairs by an unauthorized service center. The manufacturers and distributors of the **Emjoi® eMachine** do not assume responsibility for any damage caused by misuse or use other than that described in these instructions.

Model No. AP-18 / AP-18S  
US Patent No.  
5,976,157  
6,436,106  
Other Patents Pending  
© Soft Lines International Ltd. 2008

www.emjoi.com

PK-18-EMJ-18-02-0

Emjoi®  
eMachine



Electrically-operated



Shave Attachment  
(Optional Attachment)

Emjoi®  
eMachine

**Before using your Emjoi® eMachine, please read all these instructions carefully and completely.**

The **Emjoi® eMachine** is a terrific hair remover with 72 tweezer action discs to ensure rapid, non-irritating and virtually painless hair removal from the root. With its glide technology and massaging finger removing hair from the root has never been easier or more comfortable. The **Emjoi® eMachine** removes hair as short as 0.5 mm on the face, legs, bikini line and underarms leaving skin super smooth for up to 6 weeks.

**When using an epilator for the first time we suggest that you test the unit on an area that has light hair growth in order to get accustomed to the epilation process.**

### Caution

Do not store or use your **Emjoi® eMachine** where it can fall into a tub or sink of water. Do not reach for your unit if it has fallen into water, immediately unplug it.

### Caution

Before plugging into an electrical outlet, make sure that the adapter is appropriate for the local voltage. This is extremely important when traveling overseas.



### Instructions for use

For best results: Take a warm bath or shower, to open up your pores, and use a loofa or exfoliation cream in small circles to exfoliate and remove dead skin from the area you wish to remove hair. Doing this before you use your **Emjoi® eMachine** will cleanse and make your skin pliable, so removing hair will be less uncomfortable.

1. Use your **Emjoi® eMachine** in a location that has a comfortable temperature to avoid perspiration.
2. Make sure that the areas you wish to remove hair from are clean, dry and free from moisturizing cream or oil.
3. Insert the adapter plug into the bottom of the unit.
4. Plug your adapter into an electrical outlet.
5. Remove the protective cap, by gently pulling, from your **Emjoi® eMachine**.

6. To turn On your unit, press the safety switch lock and at the same time slide it up to the desired speed. Low is recommended for fine hair and high is recommended for coarse hair.  
0 Power "OFF"  
1 Low speed  
2 High speed

7. Hold the unit in your palm, at a 90° angle, so the Emjoi® logo is facing you.

8. Position your **Emjoi® eMachine** so that the discs are upright, the Emjoi® logo should be facing you.

9. To minimize discomfort, hold the skin taut surrounding the area you are removing hair from.

10. Gently glide the **Emjoi® eMachine** in short, quick, brush like or sweeping strokes in the direction of hair growth.  
**Note:** For your protection, your **Emjoi® eMachine** may slow down, or stop operating completely if it is pressed too hard against the skin.

11. Before removing hair from the bikini line and underarms it is important to use a loofa or exfoliation cream in a warm shower or bath to remove dead skin and prevent ingrown hairs. If it has been an extended amount of time since you have removed hair from your bikini line and underarms, trim the hair with a scissor or trimmer. Make sure to hold your skin taut with one hand while removing hair.

12. The **Emjoi® eMachine** is only intended to remove **individual** hair from the upper lip and chin but you must hold the unit so only **one** of the epilation heads is parallel with the skin. Do not use both of the epilation heads on the face. Hold area taut and use a small brushing motion. **Do not use like an electric shaver on your entire face!**

13. Repeat within each area until all unwanted hair is removed. The time required to remove unwanted hair depends on the user's hair type.

14. After each use clean your **Emjoi® eMachine**.

15. Keep the protective cap on your unit when it is not in use.

### Cleaning

Regular cleaning and good maintenance ensures optimum results and will extend the lifetime of your **Emjoi® eMachine**.

1. Before cleaning, make sure to turn off your unit and if you have it plugged in, unplug it from the electrical outlet.
2. Remove the epilator head by pressing the release button on the front of the unit.
3. Remove the disc cover by squeezing both sides of the disc cover and pulling up.
4. Using the brush, enclosed, remove hair on all sides of the discs.
5. Replace the disc cover by gently pressing until it clicks into place.
6. Place the epilator head back onto the unit until it clicks into its place, by lining up the toothed wheel on the body and the epilator head.
7. Put the protective cap on to safeguard the tweezers.

### To Remove Residue:

To remove residue from the tweezers, use rubbing alcohol on the tip of the tweezers with a cotton swab that has been squeezed dry.  
**Note:** Make sure that the cotton swab is not soaked with alcohol.

### Using The Shaving Attachment

#### (Optional Attachment)

1. Remove the epilator head by pressing the release button on the front of the unit.
2. Attach the shaver head with the protective cover on, and press until it clicks into place.  
**Note:** When placing the shaver attachment into the unit, make sure that the toothed wheel on the unit and the toothed wheel on the shaver attachment line up.
3. Remove the protective cover and it's ready to use.  
**Important:** The shaver head should only be used at **High** speed.
4. Hold the **Emjoi® eMachine** at a slight angle to skin and gently move it against the direction of the hair growth allowing the foil to trap the hair and smooth away any stubble.

### Cleaning The Shaving Attachment

#### (Optional Attachment)

1. Remove the protective cap.
2. Remove the shaver head from the unit by pressing the release button on the front of the unit.
3. Remove the blade and trimmer assembly from the shaver head.
4. Clean the trimmers with cleaning brush.

5. Gently shake the blade and trimmer assembly to remove hairs accumulated inside the assembly.
6. Replace the blade and trimmer assembly onto the shaver head by pressing until it clicks into place.
7. Replace the shaver head onto the unit by pressing until it clicks into place.  
**Note:** When placing the shaver head onto the unit, make sure that the toothed wheel on the unit and the toothed wheel on the shaver head line up.
8. Replace the protective cap.

### Warning/Important

- Before using your hair remover please read all these instructions carefully and completely.
- Use the **Emjoi® eMachine** only for purposes described in this instruction book.
- Please keep these instructions for future reference.
- This unit is intended for one person. We discourage sharing the unit with others.
- This appliance is not intended for use by persons (including children) with reduced physical, sensory or mental capabilities, or lack of experience and knowledge, unless they have been given supervision or instruction concerning use of the appliance by a person responsible for their safety.
- **Warning** - To reduce the risk of burns, fires or electric shock, never leave your **Emjoi® eMachine** unattended when plugged in.
- Household use only.
- Do not use an extension cord with this unit.
- Keep the appliance dry.
- This unit is for dry use only.
- Do not place or store the unit in direct sunlight. Please store your unit in a cool dry place at a temperature between 0° - 40° C.
- Do not store your unit where it can fall into a tub or sink of water.
- **Warning** - Do not use your **Emjoi® eMachine** while bathing or in the shower. Your **Emjoi® eMachine** is not waterproof or water resistant and is not intended to be used near water, in the bathtub or in the shower.
- Do not place your unit in water or drop water into your unit.
- Do not reach for your unit if it has fallen into water. Immediately unplug the unit.

- Place the adapter into the unit and then into the electrical outlet. Make sure that the plug is inserted firmly into the appliance. When you are finished using your unit turn the unit "OFF" and then remove the adapter from the electrical outlet and then from the unit.
- When you unplug your unit please pull on the plug and not on the cord.
- Always unplug your unit when it is not in use and before cleaning it.
- Do not wrap the cord of your adapter around the unit.
- Keep the cord of the adapter away from hot surfaces.
- Never use your unit if the adapter cord or electrical outlet is damaged.
- Do not cut off the adapter to use it with another plug as this can be a hazardous situation.
- Only use your **Emjoi® eMachine** with the adapter supplied with the unit. For questions regarding your adapter in the US contact 1-888-99EMJOI, M-F, 9-5 EST.
- **Caution:** Before plugging into an electrical outlet, make sure that the adapter is appropriate for the local voltage. This is extremely important when traveling overseas.
- Do not use this unit if the epilation head is damaged as this could lead to injury.
- Never use your unit if it has been damaged or dropped into water.
- Do not use your unit if it has damaged or broken tweezer discs as injury may occur.
- Do not drop or insert anything into any openings of the unit.
- Do not use your unit outdoors.
- Children should be supervised to ensure that they do not play with this appliance.
- Sometimes inflammation of the skin can occur when bacteria penetrates the skin. Cleaning the epilation head before and after each use can minimize the risk of infection.
- The **Emjoi® eMachine** is only intended to remove **individual** hair from the upper lip and chin but you must hold the unit so only **one** of the epilation heads is parallel with the skin. Do not use both of the epilation heads on the face. Hold area taut and use a small brushing motion. **The Emjoi® eMachine is NOT an electric shaver and should NOT be used like an electric razor on your entire face!** Using the **Emjoi® eMachine** like an electric shaver, without holding the skin taut, could potentially allow the **Emjoi® eMachine** to pinch or grab the skin, which could potentially cause irritation and skin damage.
- Do not use the **Emjoi® eMachine** if you have – allergic or sensitive skin that reacts to cosmetics, metals, clothing, etc., acne, body acne, warts, around moles and loose skin, diabetes, Raynaud's disease, eczema, psoriasis, hemophilia, immune deficiency, rosacea, couperose, varicose veins, wounds or when your skin has rashes or is sunburned, inflamed or irritated. Consult with your health care provider prior to use if you have any of the above conditions.

- Do not use the unit before or during menstruation, during pregnancy or for one month after giving birth unless you consult with your health care provider prior to use.
- Changes in your hormone levels (taking hormone medication, recently pregnant) can influence the color or thickness of hair growth. These changes are not caused by this product but hormonal changes.
- If you have any medical conditions, issues, questions or any sensitivity whatsoever we strongly advise you to consult with your health care provider before using this product.
- If you have a pacemaker consult with your health care provider prior to use.
- If you are epilating for the first time, we recommend doing it in the evening so any possible redness or irritation can go away overnight. We suggest testing the unit gradually over a period of two to three days to allow your skin to adjust.
- If you have never epilated before (or if it has been an extended time since you epilated) you will feel a prickling sensation when using the unit. This feeling is due to the fact that you are removing hair from the root. After a few sessions the sensation you feel should diminish.
- Removing hair from the root can cause ingrown hair and skin irritation (redness of the skin, discomfort, itching). If you know that you are prone to ingrown hair, removing hair from the root may not be for you. Regular skin massaging with a massaging glove or loofa, may help reduce the chance or occurrence of ingrown hairs. After using the epilator you can use body cream or aloe vera to soothe the skin and any possible irritation.
- Using an epilator may cause redness or irritation of the skin. This is a normal reaction that will quickly disappear, but may be longer if you have very sensitive skin or are removing hair from the root for the first few times. If any irritation remains for more than 3 days, discontinue use and consult with your health care provider.
- Sometimes inflammation of the skin can occur when bacteria penetrates the skin. Cleaning the epilation head before and after each use can minimize the risk of infection.
- The **Emjoi® eMachine** is only intended to remove **individual** hair from the upper lip and chin but you must hold the unit so only **one** of the epilation heads is parallel with the skin. Do not use both of the epilation heads on the face. Hold area taut and use a small brushing motion. **The Emjoi® eMachine is NOT an electric shaver and should NOT be used like an electric razor on your entire face!** Using the **Emjoi® eMachine** like an electric shaver, without holding the skin taut, could potentially allow the **Emjoi® eMachine** to pinch or grab the skin, which could potentially cause irritation and skin damage.

- Before removing hair from the bikini line and underarms it is important to use a loofa sponge or exfoliation cream in a warm shower or bath to remove dead skin and help minimize the chance or occurrence of ingrown hairs. If it has been an extended amount of time since you have removed hair from your bikini line and underarms (if the hair is longer than 5mm), trim the hair with a scissor or trimmer. Make sure to hold your skin taut with one hand while removing hair. Some women may experience irritation after removing hair from the underarms and bikini line for the first time. We suggest testing the unit on a small part of the skin in these areas first.
- Do not continually rub the unit on the same area or apply strong pressure.
- Keep the protective cap on your unit when it is not in use.

### Frequently asked questions

- Q: Does the **Emjoi® eMachine** hurt?  
A: The first time you use the **Emjoi® eMachine** you might feel a prickling sensation, this feeling is due to the fact that you are removing hair from the root. After several uses, the tweezing becomes more comfortable even for those with sensitive skin.
- Q: How should I hold the **Emjoi® eMachine**?  
A: To minimize discomfort, hold the skin surrounding the area you are removing hair from taut. Gently glide, do not apply pressure, the **Emjoi® eMachine** in short, quick, brush like or sweeping strokes in the direction of hair growth.  
**Note:** For your protection, your **Emjoi® eMachine** may slow down, or stop operating completely if it is pressed too hard against the skin.
- Q: Do I have to use my **Emjoi® eMachine** with the adapter?  
A: Yes. Your unit is electrically-operated and always needs to be plugged into the electrical outlet when in use.
- Q: Can I use the **Emjoi® eMachine** on my upper lip?  
A: Yes, the **Emjoi® eMachine** can be used to remove **individual** hair from the upper lip and chin but you must hold the unit so only **one** of the epilation heads is parallel with the skin. Do not use both of the epilation heads on the face. Hold area taut and use a small brushing motion.
- Q: Can I use the **Emjoi® eMachine** anywhere on my face?  
A: No. The **Emjoi® eMachine** is only **intended** to remove individual hair from the **upper lip and chin** but you must hold the unit so only **one** of the epilation heads is parallel with the skin. Do not use both of the epilation heads on the face. When removing hair from your upper lip and chin, hold skin taut and use short brushing motions. **Do not use the Emjoi® eMachine like you would an electric razor on your entire face.**
- Q: Can I use the **Emjoi® eMachine** on my bikini line and underarm?  
A: Yes. Before removing hair from the bikini line or underarms it is important

to use a loofa sponge in a warm shower or bath to remove dead skin and prevent ingrown hairs. Since these areas can be sensitive, it is important to hold the skin taut.

Q: Will my hair grow back as fast as it does when I shave?  
A: No. With shaving you are cutting the hair at the surface, so hair grows back quickly. When you use the **Emjoi® eMachine** it removes hair from the root so it takes longer, up to 4-6 week, to grow back.

Q: What if my skin becomes red after using the **Emjoi® eMachine**?  
A: Whenever you remove hair from the root your skin may become red or irritated. To soothe irritation you can use lotion with aloe vera or antibiotic ointment.

Q: What can I do for ingrown hairs?  
A: We recommend using a loofa or an exfoliation cream in the shower or bath to soften the skin and any ingrown hairs, enabling the **Emjoi® eMachine** to remove the hair from the root. If any irritation remains for more than 3 days, discontinue use and consult with your health care provider.

Q: I have varicose veins, can I use the **Emjoi® eMachine**?  
A: Regarding any medical issues or questions, we strongly advise you to consult with your health care provider prior to use.

Q: Why is the **Emjoi® eMachine** curved?  
A: Because your body is curved. The tweezing head is curved to gently and effectively glide along the contours of your body.

Q: Do I have to clean the **Emjoi® eMachine**?  
A: Yes. We recommend that you clean your unit after each use. Before cleaning make sure to turn off your unit and if it is plugged in, unplug it from the electrical outlet. Remove the disc cover of the unit by squeezing both sides of the disc cover. Using the brush, enclosed, remove hair on all sides of the disc. Replace the disc cover by gently pressing until it clicks into place.

Q: Should I let someone else use my **Emjoi® eMachine**?  
A: No. For sanitary reasons, the **Emjoi® eMachine** is only recommended to be used by one person.

### Shaving Questions

#### (Optional Attachment)

- Q: When should I use the shaving attachment?  
A: The shaving attachment is available so you can have the ultimate hair removal experience. You can epilate, for long lasting results or shave; it is totally up to you.
- Q: How do I change from the epilation head to the shaving head?  
A: Make sure that your **Emjoi® eMachine** is in the "Off" position. Press the release button on the front of the unit and gently pull off the epilation head. Place the shaving attachment into the unit by pressing until it clicks into place.