

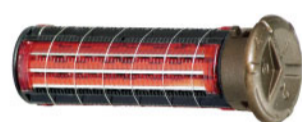
65mm

585mm

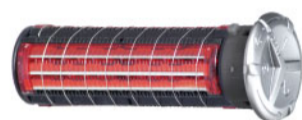
120 mm

### Available Rollers

Emjoi® Rolleshave Classic 3-cartridges Rollers are available in 4 versions designed to suit your skin type:



6W Regular Skin - Bronze



8W Sensitive Skin - Silver



10W Extra Sensitive Skin - Gold



13W Extra Extra Sensitive Skin - Blue  
- For Classic version, acne, head shaving and extra, extra sensitive skin

### Warning / Important

- Before using your Emjoi® Rolleshave Classic please read all these instructions carefully and completely.
  - Use the Emjoi® Rolleshave Classic only for purposes described in this instruction book.
  - Please keep these instructions for future reference.
  - The Emjoi® Rolleshave Classic is a men's razor for shaving beards and not for the arms and legs.
  - The Emjoi® Rolleshave Classic is not for women.
  - The Emjoi® Rolleshave Classic can be used in the shower and rinsed under running tap water.
  - Do not attempt to disassemble the unit by yourself.
  - Do not touch the blades with your fingers as it can cut the skin.
  - **Warning:** You must use shaving gel or foam while using this unit.
  - The blade is thin and precision manufactured do not press it to your skin with excessive force or hit the 3-cartridges roller with a sharp object.
  - Household use only.
  - Keep the appliance dry.
- Do not place or store the unit in direct sunlight. Please store your unit in a cool dry place at a temperature between 0°C and 40°C.
  - Do not use or leave the unit in direct sunlight near heaters, or in hot areas.
  - **Warning:** Do not turn the end cap of 3-cartridges roller to the release mark while shaving as it will release the 3-cartridges roller.
  - Do not drop the Emjoi® Rolleshave Classic while your hands are lathered and wet as it can cause harm if the unit cuts your body and can cause damage to the unit.
  - Take extra care when replacing the 3-cartridges roller as not to touch the blades with your fingers as this can result in cutting the skin.
  - Do not use the 3-cartridges roller if the blades or Spiral Windings are damaged. If they are damaged replace immediately.
  - Do not throw or damage the unit.
  - Do not use this unit if the 3-cartridges roller is damaged as this could lead to injury.
  - Never use your unit if it has been damaged.
  - Do not drop or insert anything into any openings of the unit.
  - Do not use your unit outdoors.
- Do not use your unit where aerosol product is being used.
  - Keep your unit out of reach of children.
  - This appliance is not to be used on, by or near children or invalids.
  - To prevent accidents and injury to you or damage to the unit - when your Emjoi® Rolleshave Classic is in use, keep it away from the hair on your scalp, your eyebrows, eyelashes as well as clothes, brushes, wires, cords, shoelaces etc.
  - If you have any medical conditions, issues, questions or any sensitivity whatsoever we strongly advise you to consult with your health care provider before using this product
  - Do not use benzene or other chemicals to clean the unit as this may result in damage. Clean the head under the faucet and clean the body using a damp cloth and then wipe dry.
  - Rinsing the 3-cartridges roller under the tap before and after each use can minimize the risk of infection.
  - Do not continually rub the unit on the same area or apply strong pressure.

### Warranty

The Emjoi® Rolleshave Classic warranty against defects in material and workmanship lasts one year from the date of purchase.

#### Keep original receipt for warranty service.

During this warranty period, return the product to Emjoi, Inc. with proof of purchase to FDR Station, PO Box 7406, New York, NY 10150. Emjoi will take care of repair or at their discretion, replacement of a defective unit without charge. For questions regarding this policy you may call toll free 1-888-99-EMJOI (1-888-993-6564).

**Important:** This warranty does not cover damages resulting from accidents, misuse, alterations, abuse, lack of reasonable care, or performance of services or repairs by an unauthorized service center. The manufacturers and distributors of the Emjoi® Rolleshave Classic do not assume responsibility for any damage caused by misuse or use other than that described in these instructions.

Model No. AP-3RC  
Patent No. 6,055,731  
6,305,084

Other patents issued and pending  
© Wheel Technology, Inc. 2008

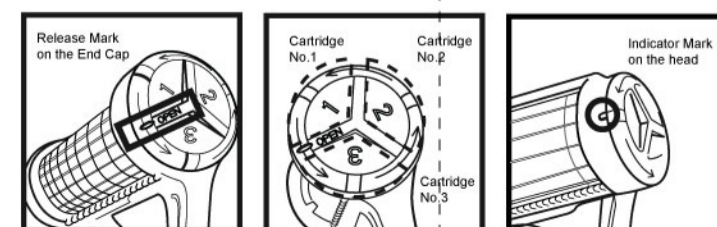
www.emjoi.com

PK-IB-EMJ-3RC-01-0



The Emjoi® Rolleshave Classic is the first razor intended for his first shave. It is a patented multi-angle blade with unique safety guard and spiral winding system that is ideal for first time shavers. It gives a fast, safe and smooth shave in 1 stroke without irritation and nicks. The unique Turn N'click feature (3 cartridges on 1 carrier) allows for a fresh blade when you need it.

### General Description



Before using your Emjoi® Rolleshave Classic, please read this instruction manual carefully and completely.

### To Select Cartridge

1. Select cartridge according to your needs by turning the 3-cartridges roller to the appropriate cartridge No. "1", "2", "3" (fig. 1).
2. You'll hear a "click" sound for every turn you select the cartridge from the 3-cartridges roller the Cartridge Button matches to the Indicator Mark on the head.



### Shaving

The Emjoi® Rolleshave Classic 3-cartridges roller is made of patented razor blades. Do not touch the blades with your fingers as it can cut the skin.  
**Important:** You must use shaving gel or foam while using this unit. Dry shaving is forbidden.

**Important:** Please confirm no malfunction on the 3-cartridges roller before use. If you should find any defect on the spiral winding and blades with worn and nicked edges, please replace with a new 3-cartridges roller.

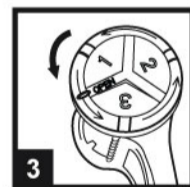
**Important:** Do not continually rub the unit on the same area or apply strong pressure.

**Important:** Be careful not to drop the Emjoi® Rolleshave Classic while your hands are lathered and wet as it can cause harm if the unit cuts your body and can cause damage to the unit.

The Emjoi® Rolleshave Classic is waterproof and can be used in the bath or shower.

Take extra care when shaving around the lips and nose.

1. Using warm water, moisten your face slightly with your hands.
2. Apply a little bit of shaving foam to the face (fig. 2) - just enough to cover the skin (do not use a lot of shaving foam).
3. Turn the razor roller to the desired cartridge (fig. 3). Each razor roller contains 3 separate blades (1, 2, 3). When you are finished using blade 1 Turn N'click to blade 2 for a fresh blade and then to blade 3 until you have completed the razor roller. To change the razor roller please see **Replacement**.
4. Moisten the head of the Emjoi® Rolleshave Classic under running water (fig. 4).



### Cleaning

1. Rinse the Emjoi® Rolleshave Classic under running water for 10 seconds (fig. 7).
2. Lightly shake to remove excess moisture (fig. 8).
3. Wipe the body of the unit with a clean dry cloth.



### Replacement

Please take extra care when replacing the 3-cartridges roller and not to touch the blades with your fingers as this can result in cutting the skin.

The 3-cartridges roller contains fragile parts.

Please handle them with care.

Replace the Emjoi® Rolleshave Classic 3-cartridges roller when you find any defects on the roller or when you feel something scratching or worse shaving result.

**Note:** 3-cartridges rollers with worn and nicked edges could cause damage to the skin.

**If the Spiral Windings are broken replace cartridge immediately.**  
**Do not use the 3-cartridges roller if the blades or Spiral Windings are damaged.**

1. Turn the end cap of the 3-cartridges roller counter clockwise until it reaches the release mark between cartridges "1" and "3", where it says OPEN (fig. 9).
2. After the 3-cartridges roller pops out, remove it from the cylinder holding the end cap of the 3-cartridges roller and dispose of it (fig. 10).
3. Remove the 3-cartridges roller from the replacement container by pressing the bottom with your pointer finger and catching it in the palm of your opposite hand.
4. Place a new 3-cartridges roller into the unit by matching the release mark, where it says OPEN, on the 3-cartridges roller with the indicator in the cylinder, pushing the roller into the cylinder and then turning it counter clockwise to cartridge no. 1 position.
5. After placing a new 3-cartridges roller into the unit check that it has been firmly installed with no signs of shaky or loose parts (fig. 12).

