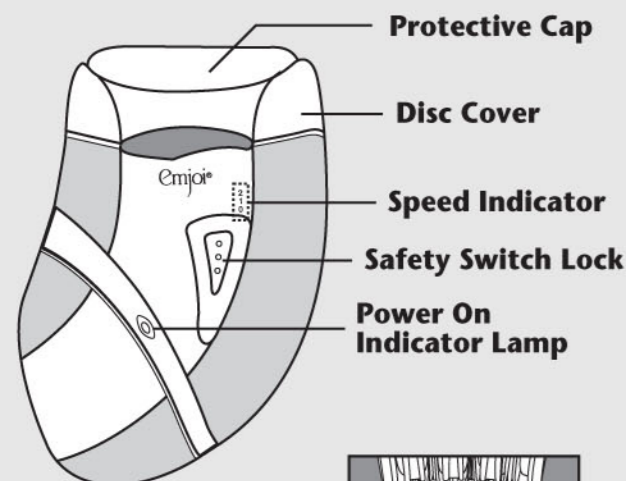


## Parts Description/Accessories Name



### Light Caress

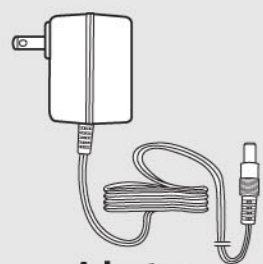


### Illuminating Light for hard to see hair

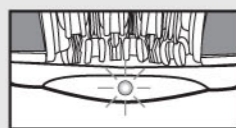
### Cleaning Brush



### Loofa



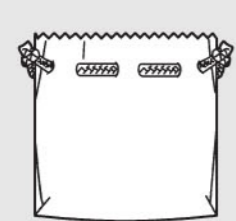
### Adapter



### Illuminating Light for hard to see hair



### Massaging Finger Attachment



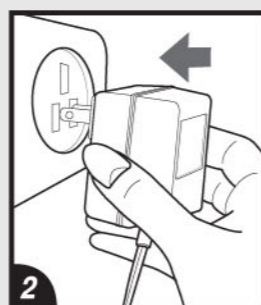
### Pouch

## Instructions for use

For ultimate results take a warm bath or shower and use the loofa, enclosed, in small circles to remove dead skin and open pores. Doing this before you use your **Emjoi® Light Caress** will help to make the hair removal process more comfortable.



1 Insert plug into base of unit.



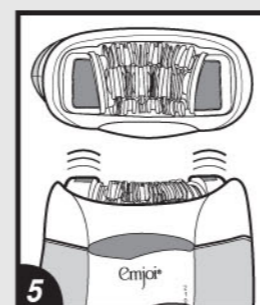
2 Place the adapter into socket.



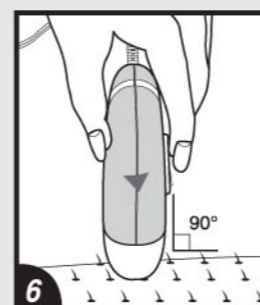
3 Remove the plastic protective cover.



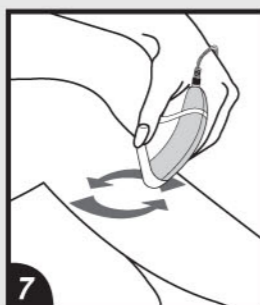
4 To turn on the unit, press the safety switch lock and at the same time slide it up to the desired speed.  
The unit has 2 speeds:  
0 Power "OFF"  
1 Low speed for fine hair  
2 High speed for coarse hair



5 The vibrating agents on the side help to eliminate discomfort.



6 Hold the unit in your palm, at a 90° angle, so the Emjoi® logo is facing you. Do not apply pressure; just glide the unit over the surface of the skin.



7 Use short, quick, brush like or sweeping motions in the direction of hair growth.



8 Make sure to hold the skin surrounding the area you are removing hair from taut, taking special care to extend the leg before removing hair from behind the knee.



9 May be used for the bikini area (hold the skin taut with one hand).



10 Can be used to remove individual hair from the upper lip and chin area.



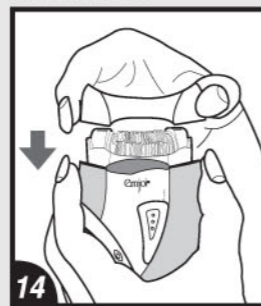
11 May be used to remove hair from underarms (extend your arm so skin is stretched taut).



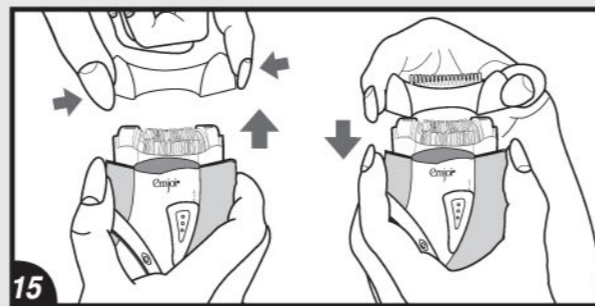
12 To Clean: Turn the unit off. Remove the disc cover of the unit by squeezing both sides of the disc cover and pulling up.



13 Gently brush the tweezers to remove any hair.



14 Replace the disc cover.



15 To use the Massaging Finger Attachment remove the disc cover and place the Massaging Finger Attachment onto the unit to make the hair removal session extremely comfortable.



16 Light illuminates hard to see hairs (light comes on when you turn the unit On).



## Before using your Emjoi® Light Caress, please read all these instructions carefully and completely.

The **Emjoi® Light Caress** is designed with 36 gold-plated tweezers to quickly and effectively remove hair from the root for weeks of smooth skin. It has pain reduction technology, designed to greatly reduce the discomfort that may be associated with when removing unwanted body hair. The **Emjoi® Light Caress** is designed to fit the contours of your body and remove hair as short as 0.5mm from the upper lip, chin, legs, bikini line and underarms. It features a spotlight to illuminate hard to see hairs so you can remove more hairs in less strokes.

## When using an epilator for the first time we suggest that you test the unit on an area that has light hair growth in order to get accustomed to the epilation process.

### Caution

Do not store or use your **Emjoi® Light Caress** where it can fall into a tub or sink of water. Do not reach for your unit if it has fallen into water, immediately unplug it.

### Caution

Before plugging into an electrical outlet, make sure that the adapter is appropriate for the local voltage. This is extremely important when traveling overseas.



## Instructions for use

**For best results:** Take a warm bath or shower, to open up your pores, and use the loofa sponge, enclosed, in small circles to exfoliate and remove dead skin from the area you wish to remove hair. You can use the loofa with any bath/shower gel or bar soap. Doing this before you use your **Emjoi® Light Caress** will cleanse and make your skin pliable, so removing hair will be less uncomfortable.

1. Use your **Emjoi® Light Caress** in a location that has a comfortable temperature to avoid perspiration.
2. Make sure that the areas you wish to remove hair from are clean, dry and free from moisturizing cream or oil.
3. Insert the adapter plug into the bottom of the unit.
4. Plug your adapter into an electrical outlet.
5. Remove the protective cap, by gently pulling, from your **Emjoi® Light Caress**.

6. To turn on your unit, press the safety switch lock and at the same time slide it up to the desired speed. Low is recommended for fine hair and high is recommended for coarse hair.

7. Hold the unit in your palm, at a 90° angle, so the Emjoi® logo is facing you.
8. Position your **Emjoi® Light Caress** so that the gold discs are upright, the Emjoi® logo should be facing you.
9. To minimize discomfort, hold the skin taut surrounding the area you are removing hair from.
10. Gently glide the **Emjoi® Light Caress** in short, quick, brush like or sweeping strokes in the direction of hair growth.

**Note:** For your protection, your **Emjoi® Light Caress** may slow down, or stop operating completely if it is pressed too hard against the skin.

11. Before removing hair from the bikini line and underarms it is important to use the loofa sponge in a warm shower or bath to remove dead skin and prevent ingrown hairs. If it has been an extended amount of time since you have removed hair from your bikini line and underarms, trim the hair with a scissor or trimmer. Make sure to hold your skin taut with one hand while removing hair.

12. The **Emjoi® Light Caress** is only intended to remove single hairs from the upper lip and chin. Hold area taut and use a small brushing motion. **Do not use like an electric shaver on your entire face!**

13. Repeat within each area until all unwanted hair is removed. The time required to remove unwanted hair depends on the user's hair type.

14. We recommend that you clean the **Emjoi® Light Caress** after each use, see Cleaning.

15. Keep the protective cap on your unit when it is not in use.

## Cleaning:

Regular cleaning and good maintenance ensures optimum results and will extend the lifetime of your **Emjoi® Light Caress**.

1. Before cleaning, make sure to turn off your unit and unplug it from the electrical outlet.
2. Remove the disc cover by squeezing both sides of the disc cover and pulling up.
3. Using the brush, enclosed, remove hair on all sides of the discs.
4. Replace the disc cover by gently pressing until it clicks into place.
5. Put the protective cap on to safeguard the tweezers.

## Remove Residue:

To remove residue from the gold plated tweezers use rubbing alcohol on the tip of the tweezers with a cotton swab that has been squeezed dry. **Note:** Make sure that the cotton swab is not soaked with alcohol.

## Massaging Finger Attachment

1. Remove disc cover of the unit.
2. Place Massaging Finger Attachment onto the unit.
3. When you are finished removing hair remove the Massaging Finger Attachment.
4. Clean the unit and replace the disc cover and protective cap.

## WARNING/IMPORTANT:

- Before using your hair remover please read all these instructions carefully and completely.
- This appliance is not intended for use by persons (including children) with reduced physical, sensory or mental capabilities, or lack of experience and knowledge, unless they have been given supervision or instruction concerning use of the appliance by a person responsible for their safety.
- Children should be supervised to ensure that they do not play with the appliance.
- Use the **Emjoi® Light Caress** only for purposes described in this instruction book.
- Please keep these instructions for future reference.
- This unit is intended for one person. We discourage sharing the unit with others.
- **Warning:** - To reduce the risk of burns, fires or electric shock, never leave your **Emjoi® Light Caress** unattended when plugged in.
- Household use only.
- Do not use an extension cord with this unit.
- Keep the appliance dry.
- This unit is for dry use only.
- Do not place or store the unit in direct sunlight. Please store your unit in a cool dry place at a temperature between 0 - 40°C.
- Do not store your unit where it can fall into a tub or sink of water.
- **Warning:** - Do not use your **Emjoi® Light Caress** while bathing or in the shower. Your **Emjoi® Light Caress** is not waterproof or water resistant and is not intended to be used near water, in the bathtub or in the shower.
- Do not place your unit in water or drop water into your unit.
- Do not reach for your unit if it has fallen into water. Immediately unplug the unit.

- Place the adapter into the unit and then into the electrical outlet. Make sure that the plug is inserted firmly into the appliance. When you are finished using your unit turn the unit "OFF" and then remove the adapter from the electrical outlet and then from the unit.
- When you unplug your unit please pull on the plug and not on the cord.
- Always unplug your unit when it is not in use and before cleaning it.
- Do not wrap the cord of your adapter around the unit.
- Keep the cord of the adapter away from hot surfaces.
- Never use your unit if the adapter cord or electrical outlet is damaged.
- Do not cut off the adapter to use it with another plug as this can be a hazardous situation.
- Only use your **Emjoi® Light Caress** with the adapter supplied with the unit. For questions regarding your adapter in the US contact 1-888-99EMJOI, M-F, 9-5 EST.
- **Caution:** Before plugging into an electrical outlet, make sure that the adapter is appropriate for the local voltage. This is extremely important when traveling overseas.
- Do not use this unit if the epilation head is damaged as this could lead to injury.
- Never use your unit if it has been damaged or dropped into water.
- Do not use your unit if it has damaged or broken tweezers discs as injury may occur.
- Do not drop or insert anything into any openings of the unit.
- Do not use your unit outdoors.
- Do not use your unit where aerosol products or oxygen is being used.
- Keep your unit out of reach of children.
- This appliance is not to be used on, by or near children or invalids.
- Only use this unit on clean, dry, lotion free skin.
- Do not use water or any other liquid on the tweezers other than rubbing alcohol.
- **To prevent accidents and injury to you or damage to the unit** - when your **Emjoi® Light Caress** is in use, keep it away from the hair on your scalp, your eyebrows, eyelashes as well as clothes, brushes, wires, cords, shoelaces etc.
- Do not use the **Emjoi® Light Caress** if you have - allergic or sensitive skin that reacts to cosmetics, metals, clothing, etc., acne, body acne, warts, around moles and loose skin, diabetes, Raynaud's disease, eczema, psoriasis, hemophilia, immune deficiency, rosacea, couperose, varicose veins, wounds or when your skin has rashes or is sunburned, inflamed or irritated. Consult with your health care provider prior to use if you have any of the above conditions.
- Do not use the unit before or during menstruation, during pregnancy or for one month after giving birth unless you consult with your health care provider prior to use.
- Changes in your hormone levels (taking hormone medication, recently pregnant) can influence the color or thickness of hair growth. These changes are not caused by this product but hormonal changes.
- If you have any medical conditions, issues, questions or any sensitivity whatsoever we strongly advise you to consult with your health care provider before using this product.
- If you have a pacemaker consult with your health care provider prior to use.

## Warranty

The **Emjoi® Light Caress** warranty against defects in material and workmanship lasts one year from the date of purchase.

## Keep original receipt for warranty service.

During this warranty period, return the product to Emjoi, Inc. with proof of purchase to FDR Station, PO Box 7406, New York, NY 10150. Emjoi will take care of repair, or at their discretion, replacement of a defective unit without charge. For questions regarding this policy you may call toll free 1-888-99-EMJOI (1-888-993-6564).

**Important:** This warranty does not cover damages resulting from accidents, misuse, alterations, abuse, lack of reasonable care, or performance of services or repairs by an unauthorized service center. The manufacturers and distributors of the **Emjoi® Light Caress** do not assume responsibility for any damage caused by misuse or use other than that described in these instructions.

Model No. AP-10L  
US Patent No. 6,123,713  
Other Patents Pending  
© Soft Lines International Ltd. 2010

www.emjoi.com

PK-IB-EMJ-10L-01-3



Electrically-operated

- Q: Can I use the **Emjoi® Light Caress** on my upper lip?  
A: Yes, The **Emjoi® Light Caress** is perfect for removing individual hairs from the upper lip.
- Important:** Hold your upper lip taut and use short brushing strokes to remove individual hairs from your upper lip.
- Q: Can I use the **Emjoi® Light Caress** anywhere on my face?  
A: No. The **Emjoi® Light Caress** is only intended to remove individual hairs from the upper lip and chin area. When removing hair from your upper lip and chin, hold your skin taut and use short brushing motions. Do not use **Emjoi® Light Caress** like you would for an electric shaver.
- Q: Can I use the **Emjoi® Light Caress** on my bikini line and underarm?  
A: Yes. Before removing hair from the bikini line or underarms it is important to use the loofa sponge, enclosed, in a warm shower or bath to remove dead skin and minimize the chance or occurrence of ingrown hair.
- Q: Will my hair grow back as fast as it does when I shave?  
A: No. With shaving you are cutting the hair at the surface, so hair grows back quickly. When you use the **Emjoi® Light Caress** it removes hair from the root so it takes longer, up to 4-6 week, to grow back.
- Q: What if my skin becomes red after using the **Emjoi® Light Caress**?  
A: Whenever you remove hair from the root your skin may become red or irritated. To soothe irritation you can use lotion with aloe vera or an antibiotic ointment.
- Q: What can I do for ingrown hairs?  
A: We recommend using a loofa sponge, enclosed, or an exfoliation cream in the shower or bath to soften the skin and any ingrown hairs, enabling the **Emjoi® Light Caress** to remove the hair from the root.
- Q: I have varicose veins, can I use the **Emjoi® Light Caress**?  
A: Regarding any medical issues or questions, we strongly advise you to consult with your health care provider prior to use.
- Q: Why is the **Emjoi® Light Caress** curved?  
A: Because your body is curved. The tweezing head is curved to gently and effectively glide along the contours of your body.
- Q: Can I use this unit without the cord?  
A: No. The **Emjoi® Light Caress** must be used with its adapter cord. Do not use any other cord with this unit other than the one Emjoi® supplied.
- Q: Do I have to clean the **Emjoi® Light Caress**?  
A: Yes. We recommend that you clean your unit after each use. Before cleaning make sure to turn off your unit and if it is plugged in, unplug it from the electrical outlet. Remove the disc cover of the unit by squeezing both sides of the disc cover. Using the brush, enclosed, remove hair on all sides of the discs. Replace the disc cover by gently pressing until it clicks into place.
- Q: Should I let someone else use my **Emjoi® Light Caress**?  
A: No. For sanitary reasons, the **Emjoi® Light Caress** is only recommended to be used by one person.
- Q: How can I remove residue from the tweezers?  
A: To remove residue from the gold plated tweezers use rubbing alcohol on the tip of the tweezers with a cotton swab that has been squeezed dry. **Note:** Make sure that the cotton swab is not soaked with alcohol.
- Q: I have a pacemaker, can I use the **Emjoi® Light Caress**?  
A: Regarding any medical issues or questions, we strongly advise you to consult with your health care provider prior to use.